

Cyllenius BongoSuite™

Cashless Payment, Contact Management and Access Control

Product Overview

A new world of cashless spending and RFID access.

The *BongoSuite™* of products opens the world of RFID and Cashless Spending to the hospitality and event management industries. Additionally, the suite allows properties to restrict access to guest or event areas based on an RFID chip. Whether used to access POS systems, loyalty points redemption, or gift card balances, this cutting edge technology allows your customers to access their payment options unbounded by location or collateral. With the *BongoSuite™* of products, your customers can spend safely and without boundaries.

Proven technology.

The products in the *BongoSuite™* are in use in the Hospitality industry today. They have proven effective in increasing guest spend and in solving difficult guest access, event management, and data acquisition challenges. The products in the suite include:

- **BongoBucks™:** Cashless payment through RFID or other means.
- **BongoAdmissions™:** Controlled access to attractions and guest areas, including guest hotel or conference rooms.
- **BongoFairs and Festivals™:** Allow charging through multiple POS systems and group leader access to complete information about all purchases.
- **BongoEvents™:** Connect event vendors and seamlessly provide relevant customer information.

This solution provides support for:

- Contactless Payments
- Shared Family Accounts
- RFID Access Control

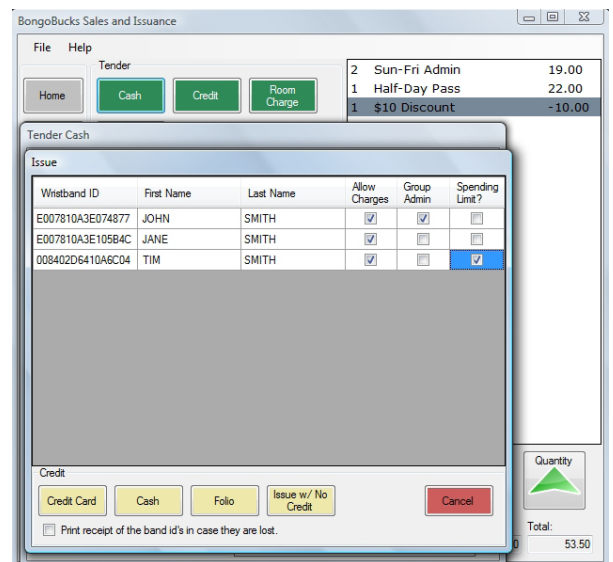
Supported in conjunction with other modules of the Cyllenius Integration Platform are:

- Multi-Property Charging and Access
- Comp and Group Charging and Access

Out of the box functionality.

Functionality included in the *BongoSuite™* includes:

- **Cashless spending:** Use RFID technology to allow your guests to make purchases by simply swiping their wristbands.
- **User or group setup:** Enable cashless spending for a single user or setup cashless spending for groups. Assign administrative rights to a "manager" with privileges to recharge wristbands and individual spending limits.
- **Sources of credit:** Provide the flexibility to use multiple sources of credit including cash, major credit cards, or the hotel room where the guest is staying.



Key Features and Benefits

- Provide customers with secure cashless spending.
- Controlled access to venues and attractions.
- Collect and access valuable customer information.

Benefits of Contactless Payments and Access

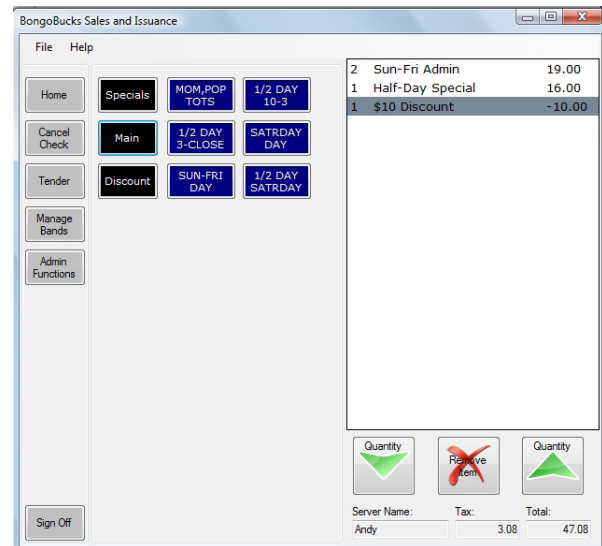
What the *BongoSuite™* provides for customers and merchants is an unparalleled measure of convenience, control, and speed. The products in the suite are designed specifically to reduce transaction times and create a unique customer experience that promotes the feeling of security and ease of use in payment and access.

Specific consumer benefits include:

- Proven reduced transaction time for customers using RFID for payment.
- Customers are freed from needing to provide their payment method directly to agents or property employees. Reduces concerns around agents access to sensitive information.
- Your customers will benefit from the flexibility of creating group accounts and allowing multiple methods of payment at all outlets and spending limits.

Specific benefits for your organization include:

- The increase in speed of transactions creates true revenue growth opportunities in cash intensive, retail environments.
- When payments are easy and flexible for customers, they make more purchases and spend more per purchase.
- Controlling access based on RFID creates unique marketing opportunities (cross selling club and restricted area access).
- Location and time based data can be collected to provide a new view of customer behavior.



Technology Expertise

The quality of a payment and access solution is defined by the ability of that solution to communicate with your existing infrastructure. Accepting payments in one location does not provide value to the customer or the organization. The ability to diffuse technology to all areas of your business is the power of the *BongoSuites™* technology. Integration with existing POS, guest access and data warehousing solutions ensures the success of the product and of contactless payment across your entire enterprise.

Our team leverages the power of Microsoft SQL Server and the Microsoft .NET Framework to craft a high performance, highly scalable integration infrastructure. In addition the *BongoSuite™* provides reporting and management capabilities in a web services framework to allow flexible deployment across many platforms.

Key benefits of this technology approach include:

- **Distributed Architecture:** Intelligent routing of customer and access information through a message aggregator ensures secure and on time delivery of critical data.
- **Global Management:** The existence of the Cyllenius Framework provides event-driven reporting and monitoring across all connected source, payment and access systems.
- **Pervasive Connectivity:** The landscape of payment and access systems continues to be volatile. The Cyllenius Framework allows your infrastructure to remain agnostic to the means of communication. The *BongoSuite™* supports open standards including JCA, WSDL, XML, JMS, Web Services, HTTPS Post and WSIF.

The Cyllenius Advantage

- Industry specific RFID solutions
- Powerful Integration
- Hospitality Focus
- Technology Expertise
- Flexible Deployment and Support

Hospitality Focus

The benefits of RFID have been exploited in the health care, transportation, shipping, and manufacturing industries for almost a decade. Cyllenius brings the benefits of RFID to the Hospitality and Event Management industries with the *BongoSuite™* of products. The features of contactless spending and RFID Access, customized to your environment are available today with this innovative and focused industry specific solution.

These products were developed specifically to meet the needs of hospitality and customer service clients. Built from the ground up with partners who have set the standard for RFID in other industries, the *BongoSuite™* from Cyllenius is the most comprehensive customer service specific RFID solution available to Hotel, Gaming and Event Management businesses.